

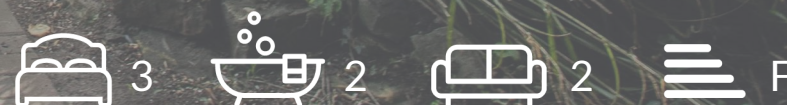


OAKFIELD



Cherry Gardens Hill, Tunbridge Wells

Price Guide £725,000





# SUMMARY

---

Guide price £725,000 - £750,000.

Tucked away in a peaceful semi-rural setting on the edge of a sought-after village, this charming and significantly improved detached cottage combines traditional character with modern finishes.

Offering spacious and flexible living accommodation, the property has been tastefully updated throughout.

A welcoming double-height reception hall leads to a superb double-aspect sitting room featuring exposed beams and a wood-burning stove.

The stylish kitchen/breakfast room has been beautifully re-fitted with shaker-style units and opens directly onto a secluded garden patio. A separate dining room, home office/study, and contemporary ground floor shower room complete the ground floor.

Upstairs are three generously proportioned bedrooms, including one with a walk-in closet, all served by a re-fitted family bathroom.

Outside, the gardens are a standout feature—extensive and private, laid mainly to lawn with mature borders, a summer house, timber shed, and a large patio ideal for entertaining.



The property backs directly onto open countryside, offering wonderful rural views and complete seclusion.

A long private driveway and brick-paved area provide ample off-street parking for numerous vehicles.

This is a rare opportunity to acquire a truly special cottage in an idyllic village-edge location—perfect for those seeking peace, space, and charm in equal measure.





**Living Room**

17'8 x 12'2

**Dining Room**

11'10 x 11'6

**Kitchen**

10'10 x 10'2

**Office**

11'10 x 5'11

**Bedroom**

25'1 x 6'8

**Bedroom**

12'2 x 11'2

**Bedroom**

12'2 x 7'7

**Council Tax Band - G £4,347 per annum**



























# INFORMATION

---

## Tenure

Freehold

## Local Authority

Wealden District Council

## Council Tax Band

**G**

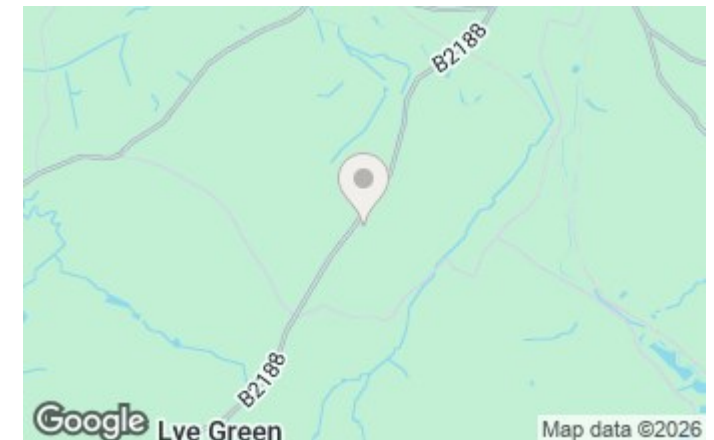
## Opening Hours

Monday to Friday	9.00am - 5.30pm
Saturday	9.00am - 4.00pm

## Viewings

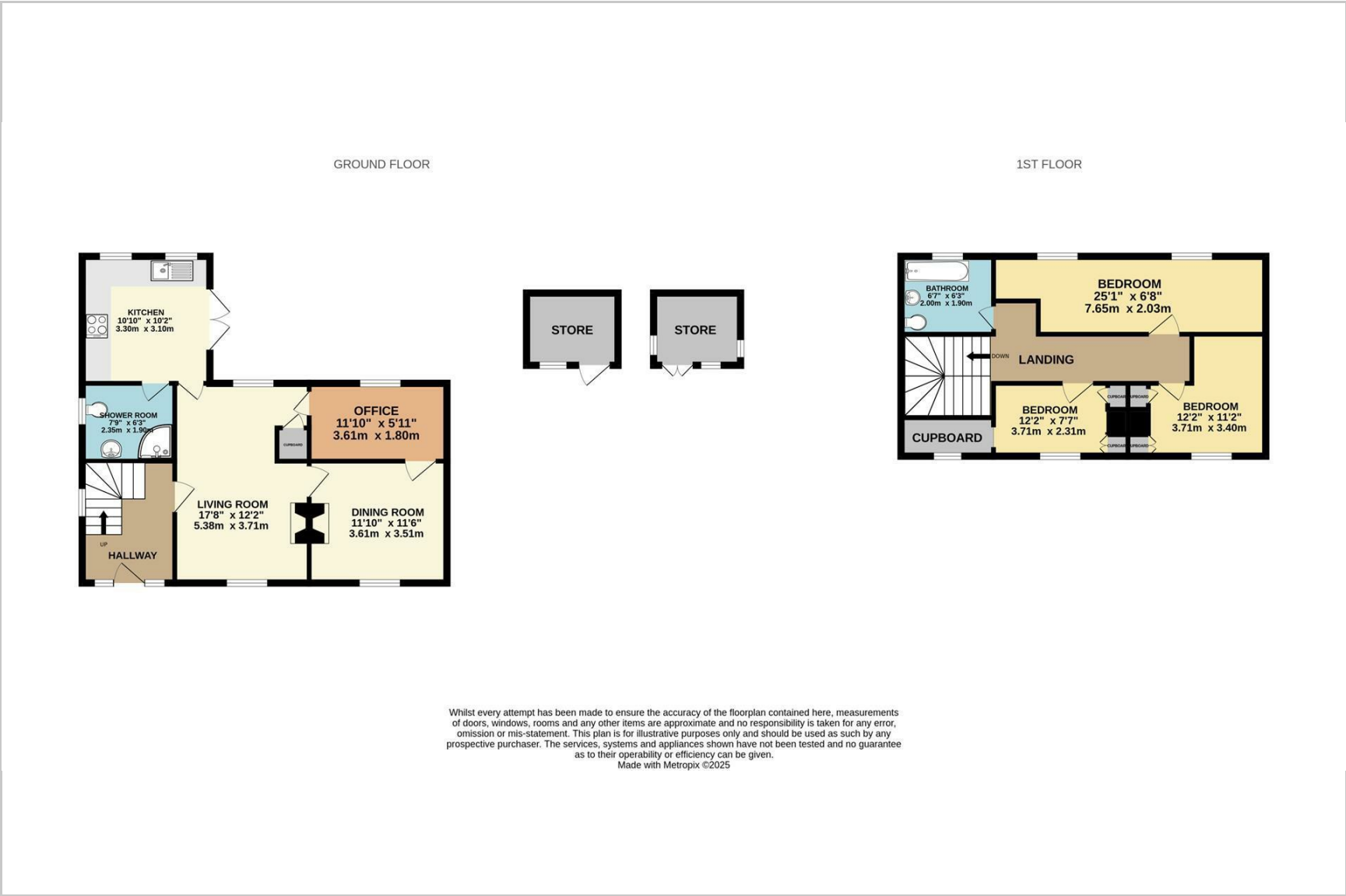
Please contact us on 01825 762132 if you wish to arrange a viewing appointment for this property or require further information.

## Area Map

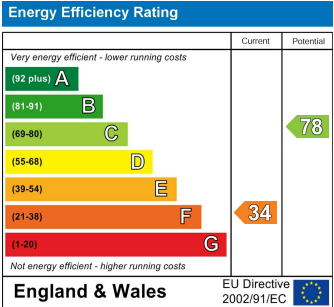




Floorplan



Energy Efficiency Graph



These particulars, whilst believed to be accurate are set out as a general outline only for guidance and do not constitute any part of an offer or contract. Intending purchasers should not rely on them as statements of representation of fact, but must satisfy themselves by inspection or otherwise as to their accuracy. No person in this firms employment has the authority to make or give any representation or warranty in respect of the property.